



THE LATIN PATRIARCHATE  
OF JERUSALEM

CONCLUSION REPORT

SUPPLY OF SCHOOLS DESKS FOR SEVERAL LATIN  
PATRIARCHATE SCHOOLS  
JORDAN

GA 151/19



GENERAL ADMINISTRATION  
PROJECT DEVELOPMENT OFFICE  
MARCH 2021

*“The aim of all Christian education, is to train the believer in an adult faith that can make him a new creation, capable of bearing witness in his surroundings to the Christian hope that inspires him”.*

*(H.H. Pope Francis)*

## THE LATIN PATRIARCHATE

The Latin Patriarchate of Jerusalem (LPJ) was restored in 1847, and since then is promoting the best interests of the local communities it serves. Today, the Patriarchal Diocese oversees about 180,000 faithful in four countries, Palestine, Israel, Jordan and Cyprus, covering a rich tapestry of cultures, languages, religions and traditions. Serving all with special emphasis on the support and care of indigenous Holy Land Christians remains the enduring mission of the Mother Church, the Latin Patriarchate of Jerusalem.

## INTRODUCTION

The Latin Patriarchate has a network of 44 schools: 13 Schools in Palestine, 25 in Jordan, and 6 in Israel, which offer the youth throughout Jordan, Palestine, and Israel a wholesome learning environment that nurtures growth. The LPJ is committed to providing quality education for boys and girls, Christians, and Muslims in all its schools, Kindergarten through Grade 12. The LPJ school system is a major source of employment in the region with 1,795 professionals, teachers, administrators, and educators serving around 19,869 students.

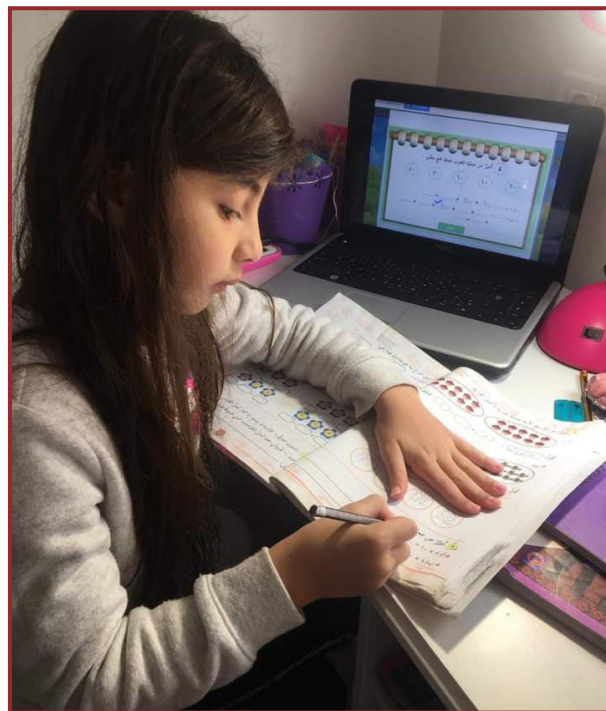


Since their inception, they have accepted students from all communities and denominations and offered a solid foundation in religious, moral, and intellectual education. Being parish schools, they work towards human and social development with emphasis on needy populations. Thus, improving the schools in villages helps reduce Christian migration to the cities and emigration to other countries and fosters ecumenical and interfaith experiences. All LPJ schools nurture the parishes and the parishes nurture the schools and it is difficult to see a vibrant parish in the Holy Land without a school.

The Latin Patriarchate believes that access to excellent education established on sound stewardship principles should be accessible to all, regardless of status or family income. LPJ subsidizes tuition costs of needy students, and maintains schools in marginalized areas operating at substantial financial loss.

COVID-19 pandemic has affected the educational systems worldwide, causing shifting to the blended education system. The Latin Patriarchate Schools strive to create and maintain a positive and safe environment that supports the learning and development of all students through the new system which combines both traditional and online learning methods to provide the students with a more engaging learning experience.

The educational process at the LPSs continued at full speed and teachers went beyond the call of duty to teach from homes and at the schools' premises despite the under-equipped educational sector, the severely weakened infrastructure at the schools, and the insufficient resources available to facilitate the continuity of education through remote learning.



## PROJECT DESCRIPTION

The schools' buildings in Jordan are very old and in some locations are considered historical heritages. Needs assessment survey carried out in various parishes by the schools' administration reveals that schools lack adequate infrastructure attention. Some deficiencies in the schools include ill-equipped classrooms and insufficient and broken desks and chairs. Conducive learning environment is very essential to learning and this must be ensured for all children of all school ages. In this context, this project aimed at upgrading the classrooms' furniture in the classrooms of Jubeiha school, that accommodate a total of 706 students, based on the need and the actual condition. Classrooms' upgrade included replacement of the old desks of the students with new ones.

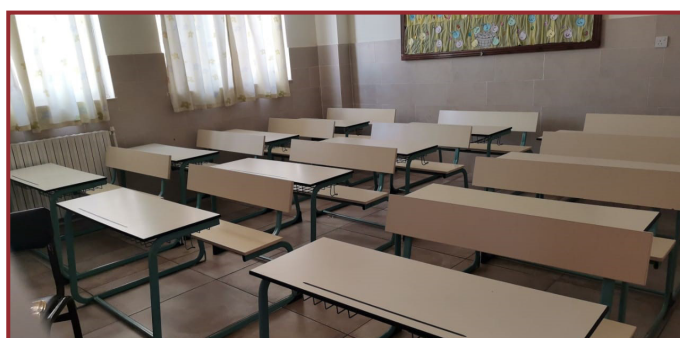
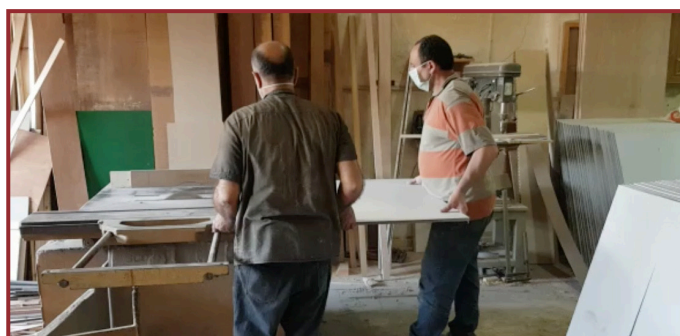
With the generous donations received from the Netherlands Lieutenancy, 199 school desks have been rehabilitated or especially custom-made for the Jubeiha LPJ school in Jordan. The project aimed to create employment to Christian craftsmen and small companies in the Jubeiha area such as blacksmiths, carpenters, and painters. The quality of the iron and the wood was superb to provide the students with a suitable educational environment and as well was custom-made to fit the needs of the school. The classrooms' upgrade included replacement or rehabilitation of the old tables and desks for the students and teachers.





## BENEFICIARIES

- The 706 students of the Latin Patriarchate school in Jubeiha in Jordan who received new and comfortable furniture for their classrooms.
- The 55 Jubeiha school teachers have a better classroom environment for their lessons.
- The Jubeiha school which now has a better equipped school, and the students' parents are more satisfied since their children study in adequate and healthy environment.
- The four Christian craftsman of the small companies like blacksmiths, carpenters, and painters who manufactured and custom-made the desks to meet the school demands.
- The Christian families of the craftsmen who were especially employed and therefore benefited from the income they made from this project.
- The Latin Patriarchate of Jerusalem which will have better-equipped schools and parents will be more satisfied and have happier and more education responsive children.



## DURATION

The activities that were supported with this grant were implemented in the timeframe between October 2019 until October 2020. The LPJ Procurement Department followed up closely the whole procurement process according to the local and internal regulations and procedures.

## BUDGET BREAKDOWN

The list below indicates the costs and how the budget was spent throughout the project period with the generous grant received. The cost per school desk in the proposal was a cost estimate and it turned out that the cost per school desk was higher than the estimate since the classroom furniture was custom-made with high quality material. Therefore only 199 new school desks could be renovated instead of the proposed 222 new school desks.

Item	Distribution of Desks	Number of Desks	Cost per Unit	Total (USD)
1	Jubeiha School	199	136.43	27,150.00

# FINANCIAL SUMMARY

## PROJECT STATEMENT OF ACTIVITY

### Financial Summary

Project Name  
**Supply of school desks for LP Schools in Jordan -2019**

Project Code  
**70008**

Reported Period  
Expectation Period

**01/10/2019 - 31/10/2020**  
**01/10/2019 - 31/10/2020**

### Project Statement of Activity

Currency  
**USD**

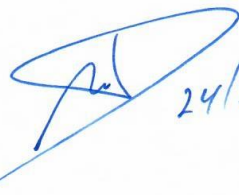
<u>Donations</u>		
	Grand Magisterium - Netherlands Lieutenancy	\$27,150
	<b>Total</b>	<b>\$27,150</b>

<u>Expenditures</u>		
	Furniture	\$27,150
	<b>Total</b>	<b>\$27,150</b>
	<b>Surplus/Deficit</b>	<b>\$0</b>

Prepared By: Rozeen Hajjar  
Financial Reporting & Control Officer



Checked By: Anton Asfar  
Director of Finance



24/3/2021

Approved By: Sami El-Yousef  
Chief Executive Officer

Sami El-Yousef  
25/3/2021



# FINANCIAL SUMMARY

## BUDGET VS EXPENDITURE

### Budget VS Expenditures

Project Name  
*Supply of school desks for LP Schools in Jordan -2019*

Project Code  
**70008**

Reported Period  
Expectation Period

**01/10/2019 - 31/10/2020**  
01/10/2019 - 31/10/2020

### Project Budget VS Expenditure

Currency  
**USD**

<u>Donations</u>				
		Actual	Budgeted	Variance
	Grand Magisterium - Netherlands Lieutenancy	\$27,150	\$27,200	\$50
	<b>Total</b>	<b>\$27,150</b>	<b>\$27,200</b>	<b>\$50</b>

<u>Expenditures</u>				
	Furniture	\$27,150	\$27,200	\$50
	<b>Total</b>	<b>\$27,150</b>	<b>\$27,200</b>	<b>\$50</b>
	<b>Surplus/Deficit</b>	<b>\$0</b>	<b>\$0</b>	

*[Signature]*

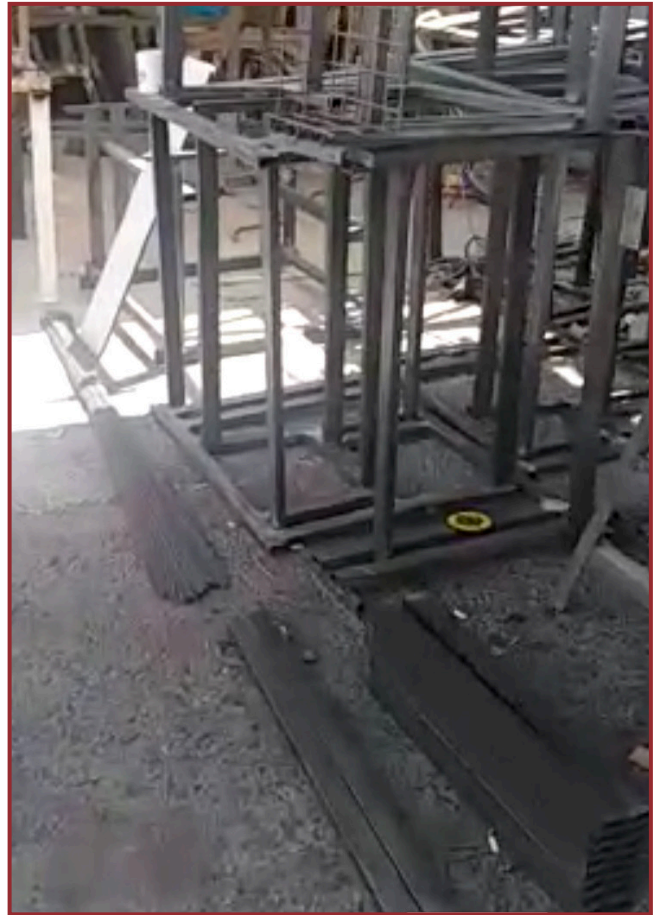
*[Signature]*  
24/3/2021

Said El-Yamny  
25/3/2021





## PHOTOS - DURING





## PHOTOS - AFTER





## PHOTOS - AFTER





## LATIN PATRIARCHATE OF JERUSALEM

**Sami El-Yousef**  
Chief Executive Officer

General Administration Office  
Jaffa Gate, P.O. Box 14152  
Jerusalem 9114101  
Tel. + 972 2 6282323  
E-mail: [ceo@lpj.org](mailto:ceo@lpj.org)  
[www.lpj.org](http://www.lpj.org)

